

Main links: [Title page](#) [Introduction & guides](#) [INDEXES](#) [chapters](#) & [genera](#) [Open PDF printout of this file](#)

Salticidae (Araneae) genera of the world - an atlas
(unfinished manuscript)
by Jerzy Prószyński
Professor Emeritus, Museum and Institute of Zoology, Polish Academy of Sciences,
ul. Wilcza 63, 00-679 Warsaw, POLAND
e-mail: jerzy.proszynski@up.p.lodz.pl

Chapter 33 LAPSIINES

informal group of genera
Version July 28th, 2020



symbol of the genera not classified into supragroups

Composition. The following genera are included: [Galianora](#) [Lapsamita](#) [Lapsias](#) [Soesiladeepakius](#) [Thrandina](#).

Exemplary representatives of the group



Diagnostic characters of representatives of informal group of genera LAPSIINES: A - *Galianora sacha*, B - *Lapsamita maddisoni*, C - *Lapsias estebanensis*, D - *Lapsias canandea*.

SOURCES: A-D - Maddison 2006 Zootaxa, Magnolia Press 1255: 23-25, f. 9, 15; 2009 2021: 5-7, f. 10-19; 11-13, f. 44-50; 8-9, f. 20-30; 15-17, f. 62-63; 2012 : 3424: 55-58, f. 11-20 All ©Copyrights are retained by the original authors and copyright holders, used here by their courtesy.

Informal group of genera LAPSIINES

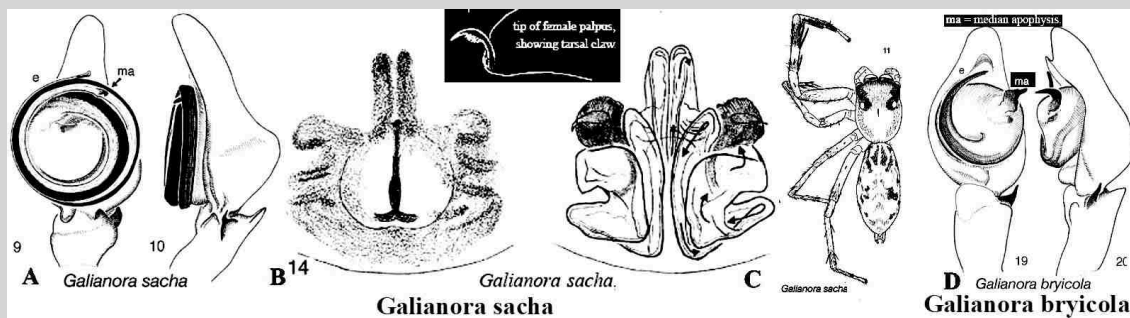
Remarks. Poorly known South American genus *Lapsias* Simon, 1900 was included by Simon (1901-1903) into Astieae. Some considerations contributed recently by Maddison (2012, 2015: 237), Ruiz & Maddison (2012) and other, concentrate on phylogeny, giving little attention to identification by morphology.

Mutual diagnostic characters of genera included. Ask Maddison. Palp of *Lapsias estebanensis* and *Lapsamita maddisoni* do not seem to fit *Lapsias canandea*, so are spermathecae of these species, eyes II of *Thrandina parocula* are relatively large, closer to eyes I and moved closer to main body axis.

Gen. *Galianora* Maddison, 2006

Type species *Galianora sacha* (2 recognizable species).

See more species at [Galianora-Q+M](#).



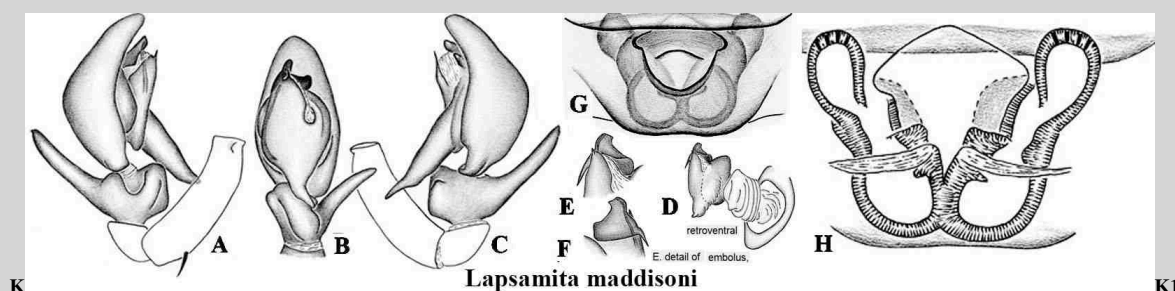
A-C - *Galianora sacha*, D - *Galianora bryicola*.

SOURCE. Maddison, 2006. Zootaxa, 1255: 23-25, f. 9-16 + 17-21. © Magnolia Press. All ©copyrights are retained by the original authors and copyright holders, used by their courtesy.

Gen. *Lapsamita* Ruiz, 2013

Type species *Lapsamita maddisoni* (1 recognizable species).

See more species at [Lapsamita-Q+M](#)





Lapsamita maddisoni

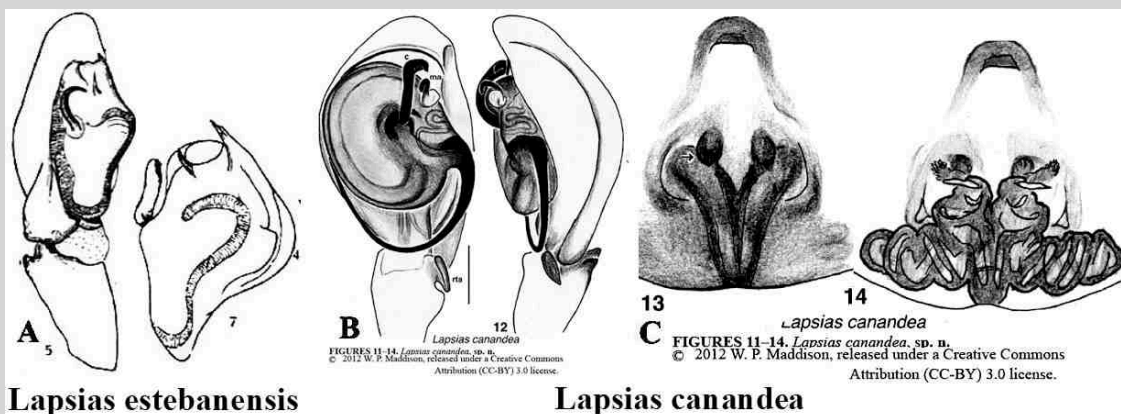
A-K - *Lapsamita maddisoni*.

SOURCE. Ruiz, 2013. Brazil. Plos One: 8(2): e56188, f. 1-3. All ©copyrights are retained by the original authors and copyright holders, used by their courtesy.

Gen. *Lapsias* Simon, 1900

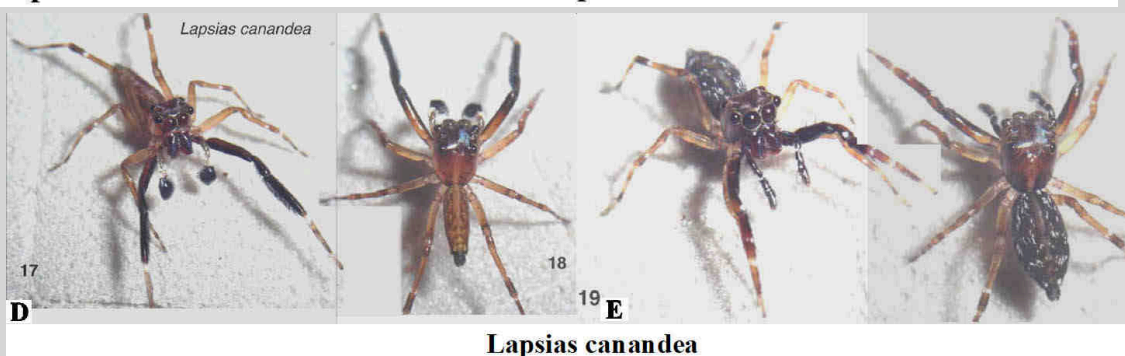
Type species *Lapsias estebanensis* (7 recognizable species).

See more species at [Lapsias-Q+M](#)



Lapsias estebanensis

Lapsias canandea



Lapsias canandea

A - *Lapsias estebanensis*, B-E - *Lapsias canandea*.

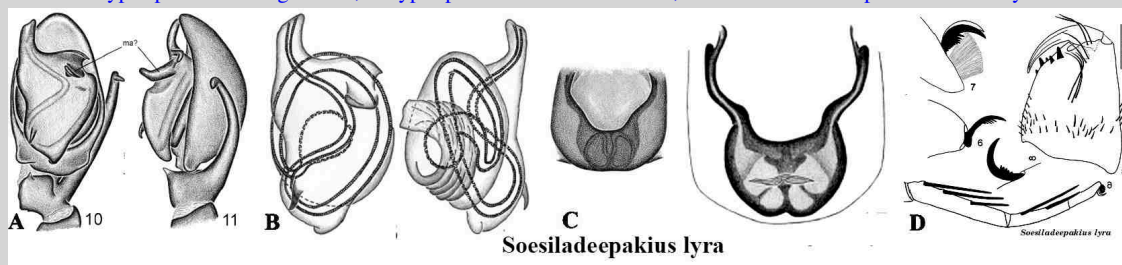
SOURCE. A - Galiano 1963b. Physis, 23 (66): 380, 382-383, t. 25, f 5,7, B-E - Maddison 2012. Zootaxa: 3424: 55-58, f 11-20 © Magnolia Press, Maddison, 2006. Zootaxa, 1255: 23-25, f 9-16 + 17-21. © Magnolia Press. All ©copyrights are retained by the original authors and copyright holders, used by their courtesy.

Gen. *Soesiladeepakius* Makhan, 2007

Type species *Soesiladeepakius aschnae* (type species unrecognizable + 6 recognizable species).

See more species at [Soesiladeepakius-Q+M](#)

Attention: type species unrecognizable, its type specimen cannot be found, "believed to be comparable with *S. lyra*"



Soesiladeepakius lyra

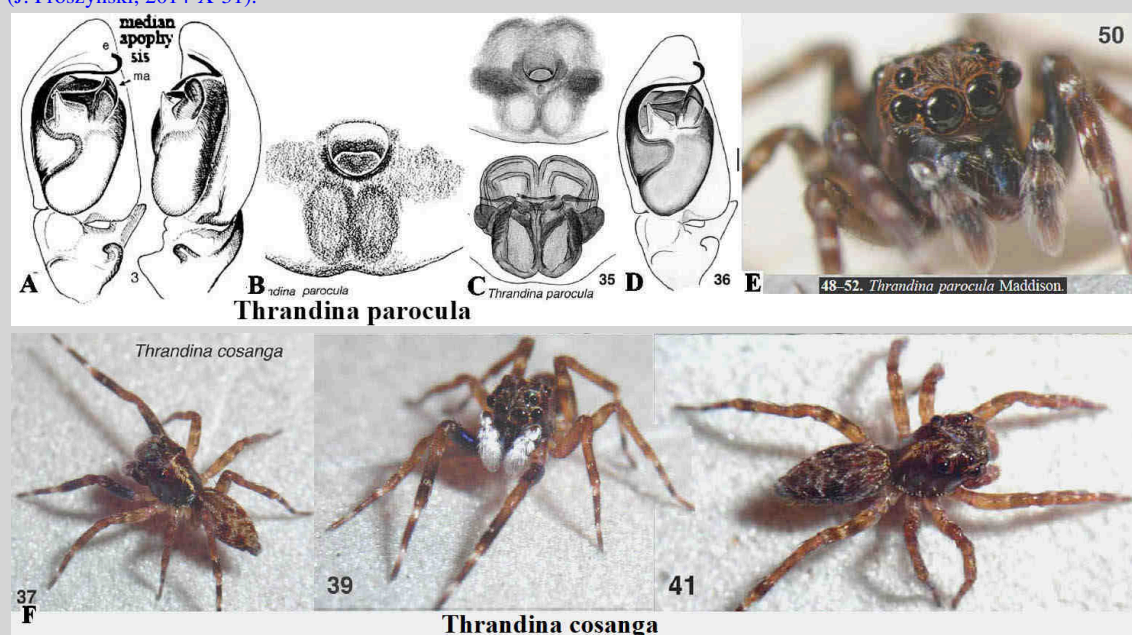
A-D, F-G - *Soesiladeepakius lyra*, E - diversity of palpal femur protuberances in 6 species of *Soesiladeepakius*.
SOURCE. Ruiz & Maddison, 2012: 279, f. 1-15, 47. All copyrights are retained by the original authors and copyright holders, used by their courtesy.

Gen. *Thrandina* Maddison, 2006

Type species *Thrandina parocula* (3 recognizable species).

See more species at [Thrandina-Q+M.](#)

REMARKS. Genus originally placed in Lapsiinae by Maddison 2006. There are some tentative resemblances to SPARTAEINES in shape of spermathecae and general shape of male palps, in spite of presence of prominent tegular apophysis. Grouping of eyes and size of PME resembles *Brettus* and some other genera. No representative of SPARTAEINES was ever found in Western Hemisphere. (J. Prószyński, 2014-X-31).



A-E - *Thrandina parocula*, F - *Thrandina cosanga*.

SOURCE: Maddison W.P. 2006. Zootaxa, 1255: 20, f 2-8; 2012: 3424: 65, f 24-42, 48–52. © Magnolia Press. All ©copyrights are retained by the original authors and copyright holders, used by their courtesy.